

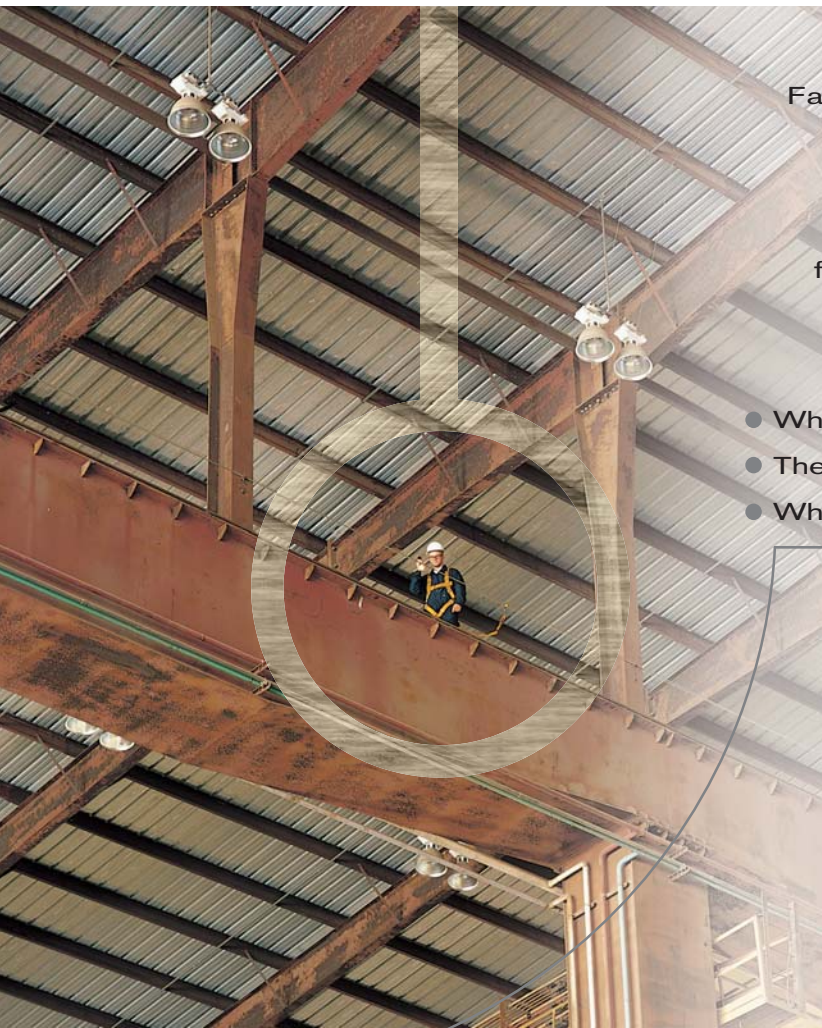
ManSafe® for Industry

Fall protection systems
for industrial applications

Overhead Systems
Horizontal Systems
LadderLatch™
VersiRail
Self Retracting Lifeline (SRL)



Fall protection matters



Falls from height are the single biggest cause of death and one of the biggest causes of serious injury in the workplace today. For businesses whose workers need to operate quickly and effectively at height, fall protection is already a major issue—and it's going to become increasingly important as regulatory authorities introduce ever-stricter rules governing:

- Where height safety should be implemented.
- The systems that are acceptable for use.
- Who is responsible for ensuring worker safety.

Are you responsible?

The answer could well be 'Yes'. According to the health and safety legislation these people are 'dutyholders' — responsible for ensuring adequate fall protection and potentially liable in the event of an accident.

What you need to do

The official advice to duty-holders can be summarised as follows:

Avoid work at height, where possible.

When working at height is essential, ensure that workers are not exposed to unnecessary risks.

Where it is not possible to eliminate the risk of falling, **use a suitable fall protection system to minimise the consequences of a fall.**

Designer/Architect

Health and Safety Manager

Premises/Facilities Manager

CDM Co-ordinator

Principal Contractors/
Sub-Contractor

Client/Building Owner

The global leader in fall protection systems is Latchways plc.

ManSafe® for Industry

Fall protection for industrial applications

Overhead System

Latchways' overhead systems combine revolutionary Constant Force® technology with an innovative mobile anchorage in a robust solution that offers outstanding levels of safety, convenience and versatility in virtually any industrial environment.

Workers attached to the overhead system enjoy both unfettered mobility and continuous, hands-free security whilst working at height.

Safety

System tested to EN 795.

Mobile anchorage certified by SATRA.

Conforms to EN 362:1992.

System uses 1 x 19 stainless steel \varnothing 9 mm cable. This has low stretch properties and has a breaking strain of over 45 kN.

In-line Constant Force energy absorber ensures that the maximum load on the worker and end anchor in the event of a fall does not exceed 18 kN.

System cable is tensioned to 5 kN to prevent cable sag and possible whiplash in the event of a fall.

Mobile anchorage glides freely through intermediate cable guides allowing mobility of the worker at different angles for continuous hands-free protection.



Ease of installation and use

Quick and simple installation.

Suitable for virtually all industrial environments – warehouses, loading bays for example.

Less costly to install than 'I' beam systems.

Can be configured as a single span (up to 60 m) or multi-span system.

Can be used by up to three workers.

Mobile anchorages remain permanently attached to system.

Can be retrofitted to existing structures or incorporated at the design stage of new facilities.

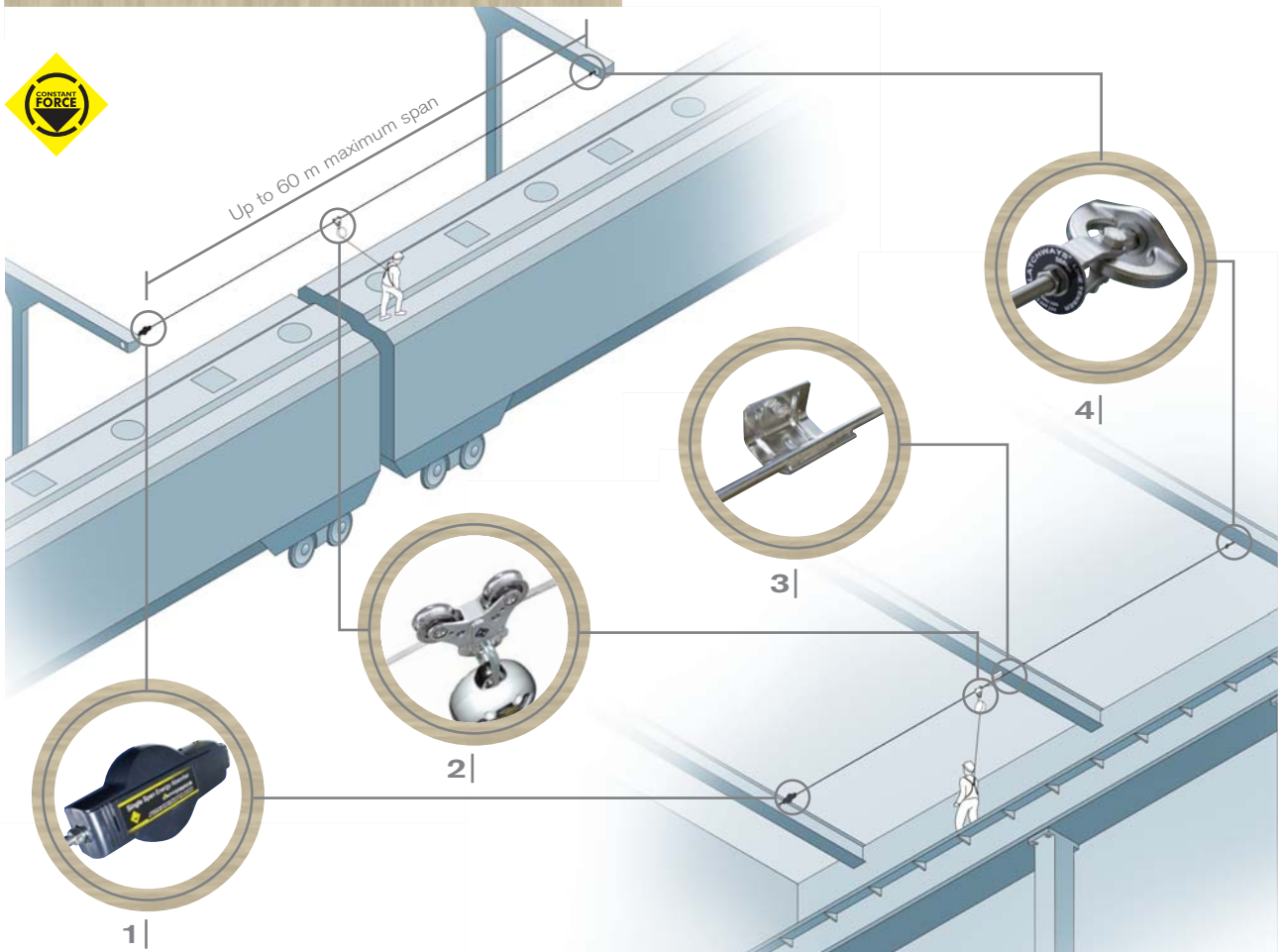
Easily able to accommodate changes of direction.

Written warranty available on service life of system.

Overhead — Single and Multi-Span systems

Typical uses of overhead systems illustrated: rail car loading bay and internal factory access.

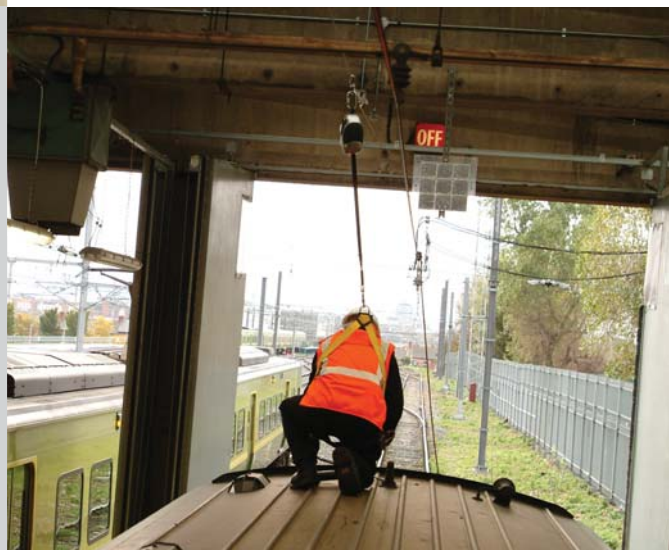
Single Span system



Multi-Span system

Components

- 1 | Constant Force Energy Absorber**
Located at one end of the system, the energy absorber ensures that the maximum load transferred to the structure in the event of a fall does not exceed 18 kN.
- 2 | Overhead System Mobile Anchorage**
Connects the user via a SRL (self retracting lifeline) to the overhead fall protection cable.
- 3 | Intermediate Brackets**
Support the cable on multi-span systems and also accommodate change in direction.
- 4 | Line Tensioning Device**
Allows the system to be correctly tensioned for use. The indicator disc will spin freely when the correct tension is reached at 5 kN.



ManSafe® for Industry Self Retracting Lifeline

Latchways has combined innovative engineering, superior materials and futuristic design with quick and easy maintenance to provide the most advanced range of self retracting lifelines (SRL) on the market. The range is designed for use with the ManSafe overhead single and multi-span systems – providing the complete solution for overhead industrial fall protection.

The SRLs have been developed with a number of unique features to provide a smarter, safer and stronger alternative to traditional SRLs.

- ✓ Patented frictionless braking system
- ✓ 100% reliable locking mechanism not driven by tensioned springs
- ✓ Modular construction wrapped in a strengthened case
- ✓ Reduced maintenance time and costs



2 m Webbing SRL

Model	Line Type	Length (m)	Size L x W x D (mm)	Weight (kg)	Anchorage
62002-00	20 mm Polyester Web with Vectran® Core	2	111 x 94 x 61	1.0	Double Locking Snap Hook
62102-00	20 mm Polyester Web with Vectran® Core	2	111 x 94 x 61	1.3	Scaffold Hook

3.6 m and 7 m Webbing SRL

Model	Line Type	Length (m)	Size L x W x D (mm)	Weight (kg)	Anchorage
62004-00	20 mm Black Polyester Web	3.6	221 x 142 x 99	1.9	Double Locking Snap Hook
62007-00	25 mm Black Polyester Web	7	275 x 185 x 125	3.8	Double Locking Snap Hook

7 m, 10 m and 15 m Cable SRL

Model	Line Type	Length (m)	Size L x W x D (mm)	Weight (kg)	Anchorage
62207-00	Ø 5 mm Stainless Steel Cable (7x19)	7	330 x 170 x 122	4.9	Swivel Double Locking Snap Hook
62407-00	Ø 5 mm Galvanized Steel Cable (7x19)	7	330 x 170 x 122	4.9	Swivel Double Locking Snap Hook
62210-00	Ø 5 mm Stainless Steel Cable (7x19)	10	357 x 185 x 125	5.6	Swivel Double Locking Snap Hook
62410-00	Ø 5 mm Galvanized Steel Cable (7x19)	10	357 x 185 x 125	5.6	Swivel Double Locking Snap Hook
62215-00	Ø 5 mm Stainless Steel Cable (7x19)	15	396 x 215 x 130	7.4	Swivel Double Locking Snap Hook
62415-00	Ø 5 mm Galvanized Steel Cable (7x19)	15	396 x 215 x 130	7.4	Swivel Double Locking Snap Hook

Solutions for any situation

As you would expect from the global leader in fall protection systems, Latchways' product range is designed for use in a wide variety of industrial applications. Horizontal, LadderLatch™ and VersiRail systems are as versatile and durable as the overhead solutions with the advantage that they can be used in situations where overhead systems are inappropriate.

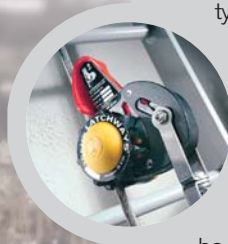
Horizontal systems

Latchways' horizontal systems are built around the innovative Transfastener™ and patented Constant Force technology, which provide continuous hands-free security and guarantee unrivalled fall protection. The system range is inherently flexible using 7 x 7 Ø 9 mm stainless steel cable with a variety of in-line components and can be designed for up to five simultaneous users. Suitable for use on virtually any type of structure or roofing arrangement, it can be specified as a single cable system or a multi-faceted system that follows the contours of the structure being worked on.



LadderLatch systems

The Latchways LadderLatch system can be fitted to any type of fixed industrial ladder and installed to follow the contours of any structure it is attached to, thereby maximising user safety. As with the horizontal systems, the LadderLatch solution employs Latchways' Transfastener and Constant Force technologies to provide hands-free security and industry-leading fall protection. LadderLatch systems can be installed as part of a new build or retrofitted and are suitable for use by up to four workers at a time.



VersiRail

The VersiRail guardrail provides a comprehensive collective protection solution for worker safety at height. There are four style variations available as a non-penetrative self-weighted system or alternatively with a choice of fixing plates. It is quick and easy to install and can be used on virtually any flat surface.



ManSafe® for Industry

Why choose Latchways?

With over 30 years' experience and a worldwide installer network, Latchways is the global leader in fall protection. Latchways revolutionised fall protection with its patented Transfastener and Constant Force technologies and continues to innovate, with new products being designed and manufactured specifically for use across different industrial environments.

Engineering excellence

All Latchways systems are manufactured to the highest international standards, using only the best materials.

System components are individually numbered, batch conformance and dye penetrant tested—a quality standard unsurpassed in the industry.

In addition to rigorous in-house testing, all Latchways products undergo external verification to ensure they meet or exceed the relevant industry standards. Latchways' products are specifically developed to take account of the latest structural innovations and the company's commitment to excellence means that its systems have a proven track record of safety and reliability—even in the most extreme environments.



There are numerous standards which fall protection systems must comply with in order to be fit for purpose.

All Latchways products comply with the relevant standards and appropriate regulations.

Standards

The key standards relating to fall protection systems for use in industrial environments are:

EN 353-1 Personal Protective Equipment (PPE) against falls from a height. Specification for guided type fall arresters on a rigid anchorage line.

EN 353-2 PPE against falls from a height. Guided type fall arresters including a flexible anchor line.

EN 341 PPE against falls from a height. Descender devices.

EN 354 PPE against falls from a height. Lanyards.

EN 355 PPE against falls from a height. Energy absorbers.

EN 358 PPE for work positioning and prevention of falls from a height. Belts for work positioning and restraint and work positioning lanyards.

EN 360 PPE against falls from a height. Retractable type fall arresters.

EN 361 PPE against falls from a height. Full body harness.

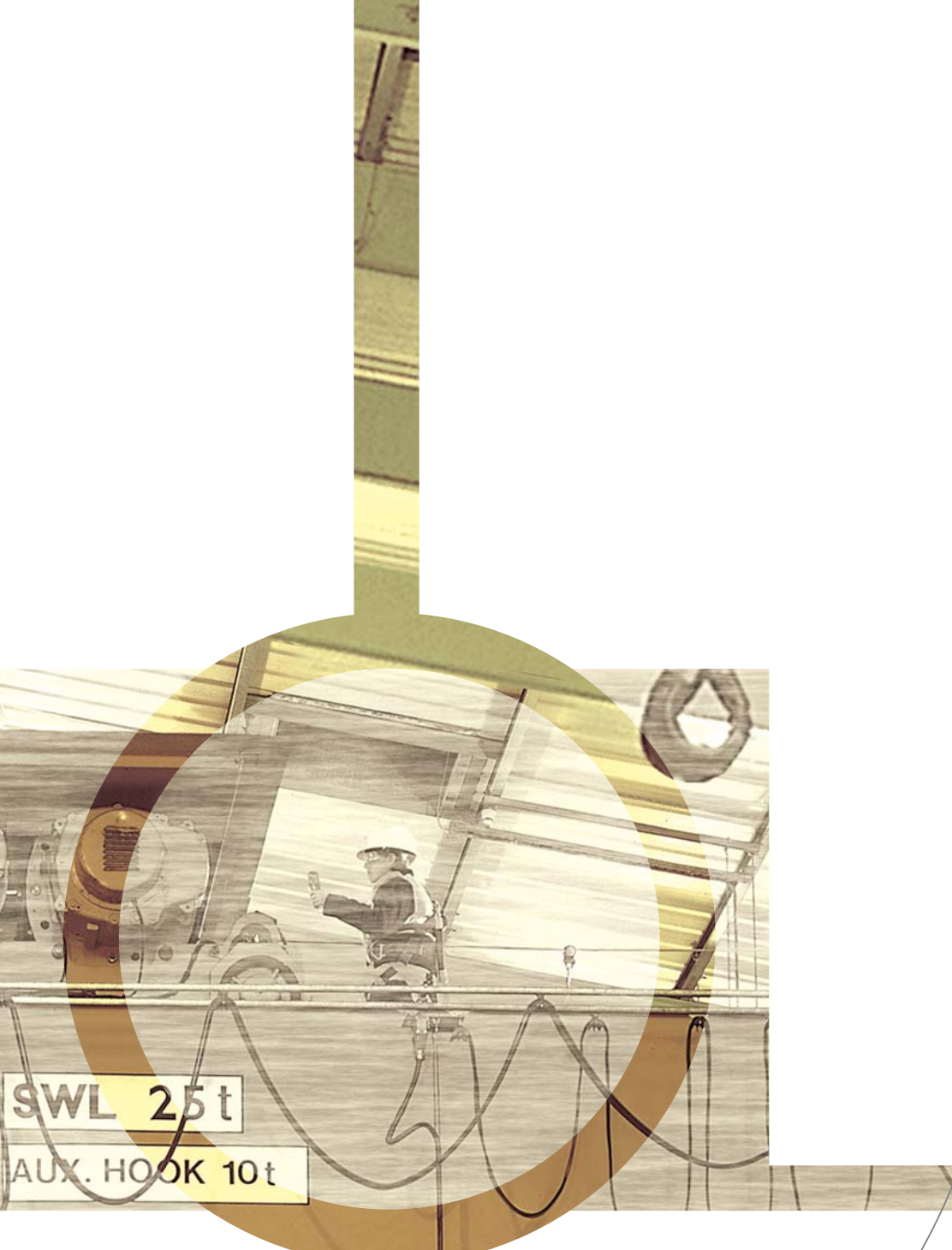
EN 362 PPE against falls from a height. Connectors.

EN 363 PPE against falls from a height. Fall arrest systems.

EN 364 PPE against falls from a height. Test methods.

EN 795 PPE against falls from a height. Anchor devices. Requirements and testing.





ManSafe®

ManSafe® and Constant Force® are registered trademarks of Latchways plc

Transfastener™ and LadderLatch™ are trademarks of Latchways plc

Latchways plc, Hopton Park, Devizes, Wiltshire, SN10 2JP, England

Tel: +44 (0)1380 732700 Fax: +44 (0)1380 732701

Email: info@latchways.com Website: www.latchways.com